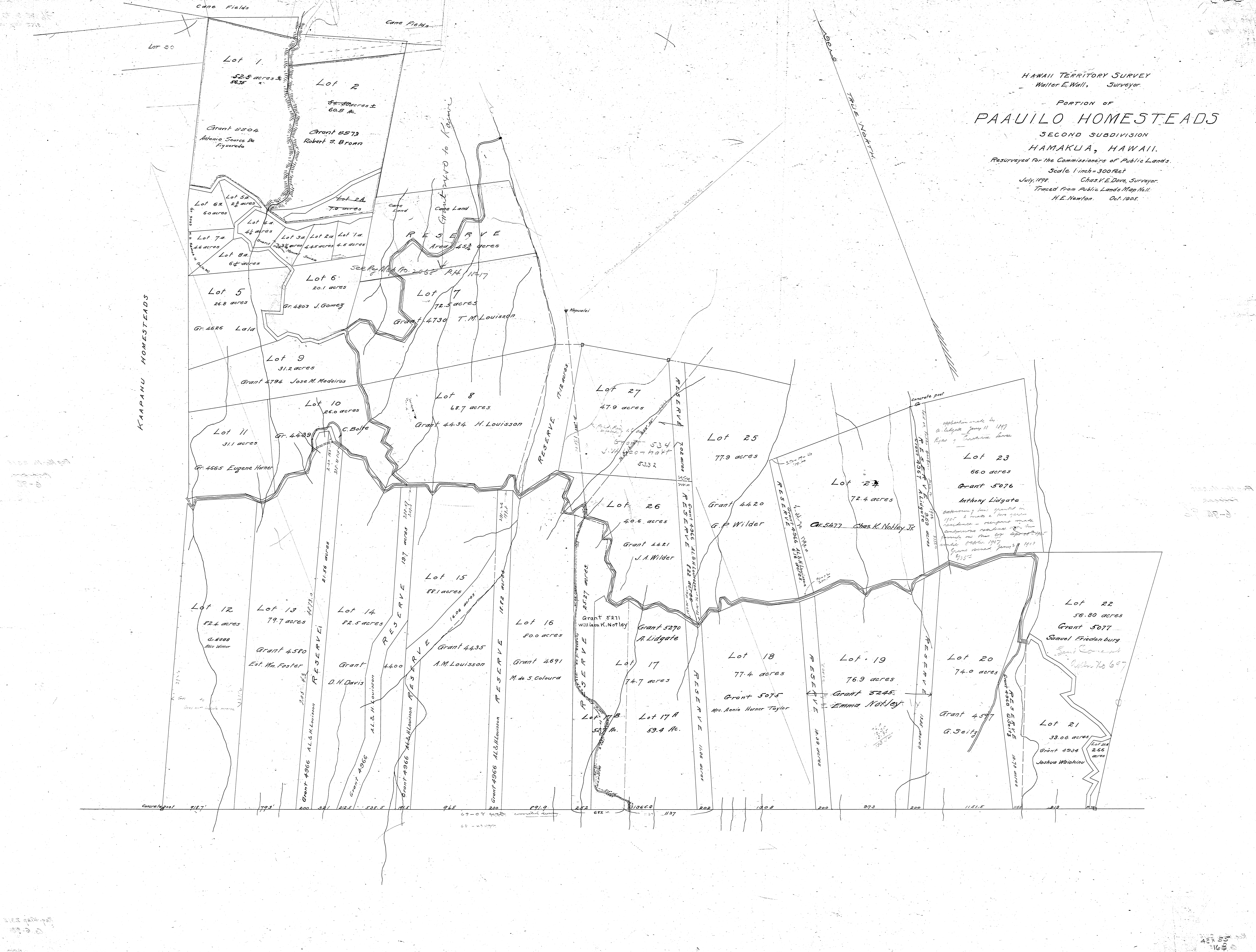


HAWAII TERRITORY SURVEY
 Walter E. Wall, Surveyor.
 PORTION OF
PAAUILO HOMESTEADS
 SECOND SUBDIVISION
 HAMAKUA, HAWAII.
 Resurveyed for the Commissioners of Public Lands.
 Scale 1 inch = 300 feet
 July, 1898. Chas. F. E. Dove, Surveyor.
 Traced from Public Lands Map No. 11.
 H. E. Newton. Oct. 1905.

KAAPAHU HOMESTEADS



91.7' 79.5' 200 321 212.5 534.5 115 96.5 67.9 200 291.9 2.62 682 1365.0 1137 202 130.8 200 973 200 1151.5 115 212 212